

CDS Invenio for admins

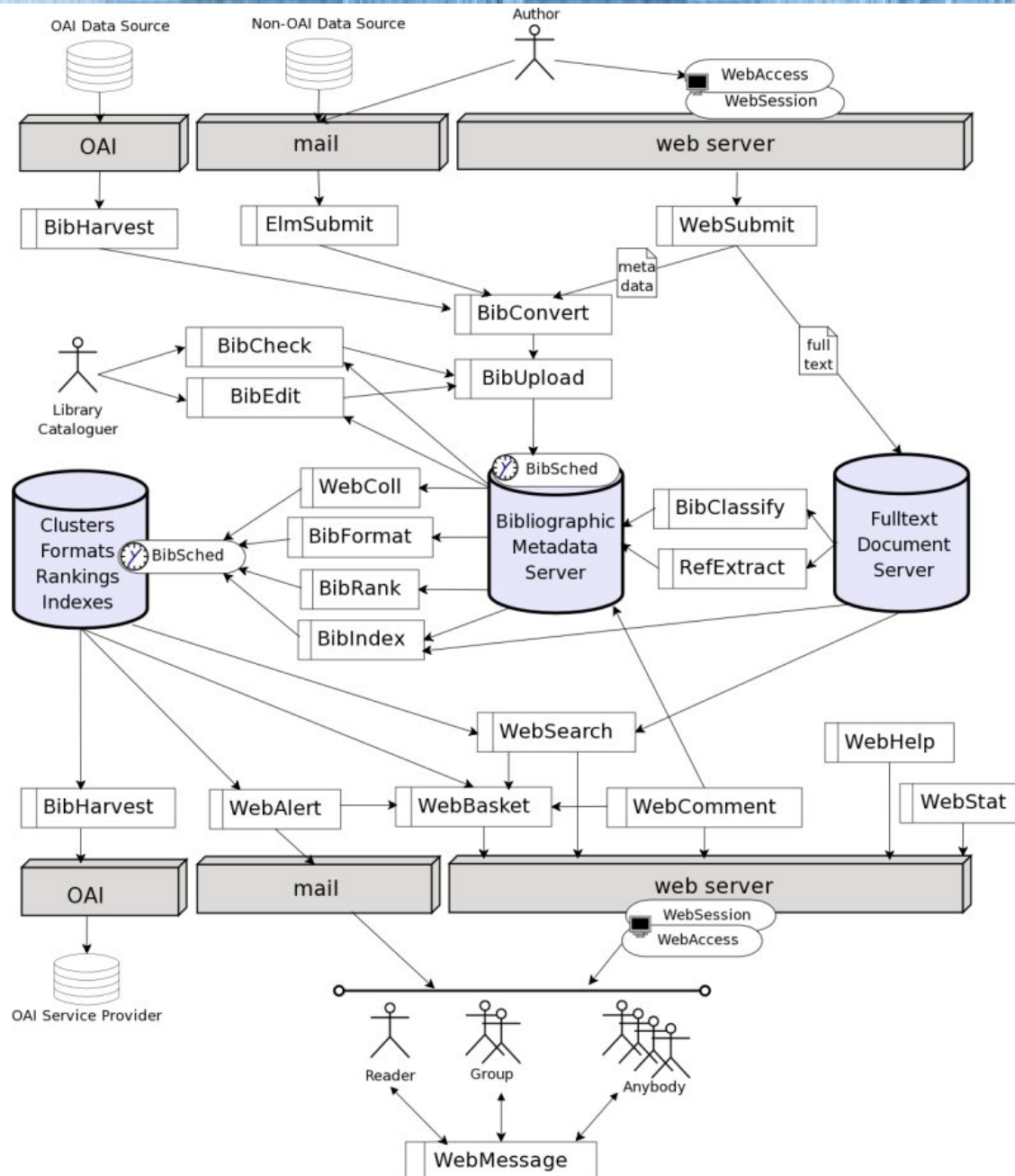
http://cdsware.cern.ch/invenio/doc/uoamsd2008_admins.pdf

How to install

- Unix
- Python
- Apache + mod_python
- MySQL + MySQLdb
- other smaller dependencies
- See: <http://cdsware.cern.ch/download/INSTALL>
- Contact project-cdsware-users@cern.ch in case of problems.

The architecture

- 24 modules
- 160,000 Python Lines of code
- 470+ test cases



Authentication

```
33 class ExternalAuth:
34     """External authentication template example."""
35
36     def __init__(self, enforce_external_nicknames=False):
37
38
39
40
41
42
43
44
45
46
47     def auth_user(self, username, password, req=None):
48         """Authenticate user-supplied USERNAME and PASSWORD. Return
49         None if authentication failed, or the email address of the
50         person if the authentication was successful. In order to do
51         this you may perhaps have to keep a translation table between
52         usernames and email addresses.
53         Raise InvenioWebAccessExternalAuthError in case of external troubles.
54         """
55         raise NotImplementedError
56         #return None
57
58     def user_exists(self, email, req=None):
59
60
61
62
63
64
65     def fetch_user_groups_membership(self, username, password=None, req=None):
66
67
68
69
70
71
72
73     def fetch_user_nickname(self, username, password=None, req=None):
74
75
76
77
78
79
80     def fetch_user_preferences(self, username, password=None, req=None):
81
82
83
84
85
86
87
88
89
90
91
92
93
94
95     def fetch_all_users_groups_membership(self, req=None):
```

To support an external authentication method (e.g. to interact with an institutional Human Resources Database, implementing:

- user/password checking
- External group/ mailing list membership importing
- External user details (e.g. phone number, affiliation...)

Authorization demo

- RBAC (Role Based Access Control):
<http://csrc.nist.gov/groups/SNS/rbac/>
<http://cdsweb.cern.ch/help/admin/webaccess-admin-guide>
- FireRole (Firewall Like Role Definition):
<http://cdsweb.cern.ch/help/admin/webaccess-admin-guide#6>

WebAccess Admin

selection for WebAccess Admin

Role Area

main area to configure administration rights and authorization rules.

Action Area

configure administration rights with the actions as starting point.

User Area

configure administration rights with the users as starting point.

Reset Area

reset roles, actions and authorizations.

Manage accounts Area

manage user accounts.



Available WebSubmit Document Types

Main Menu

- | | | | | | |
|-----------------------------------|-----------------------------|--------------------------|-------------------------|----------------------|---------------------|
| 0. Show all | 1. Available Document Types | 2. Add New Document Type | 3. Remove Document Type | 4. Available Actions | 5. Available Checks |
| 6. Available Element descriptions | 7. Available Functions | 8. Organise Main Page | 9. Guide | | |

Select a Document Type:

- Demo Article Submission [DEMOART]
- Demo Book Submission (Refereed) [DEMOBOO]
- Demo Picture Submission [DEMOPIC]
- Demo Poetry Submission [DEMOPOE]
- Demo Thesis Submission [DEMOTHE]

Add New Doctype





Inputting with BibHarvest

BibHarvest Admin Interface

Overview of sources [?] [add new OAI source]

1 OAI sources currently present in the database

name	baseURL	metadatatprefix	frequency	bibconvertfile	postprocess	actions
cds	http://cdsweb.cern.ch/oai2d	marcxml	daily	oaimarc2marcxml.xsl	h-c-u	edit / delete

Harvesting status [?]

Next oaiharvest task

- scheduled time: 2008-07-04 15:09:12
- current status: **WAITING**

name	last update
cds	2008-07-04 10:08:52

- OAI-PMH harvesting
- Generic harvesting
- (BibConvert introduction)
- OAI exposing



Under the hood

```
id      PROC [PRI]  USER      RUNTIME      SLEEP  STATUS  PROGRESS
-----
7       bibindex    admin     2008-07-04 19:53:16  5m     WAITING
8       bibreformat admin     2008-07-04 19:53:55  5m     WAITING
13      oaiharvest  admin     2008-07-04 19:53:59  5m     WAITING
11      oaiarchive  admin     2008-07-04 19:53:59  5m     WAITING
9       webcoll     admin     2008-07-04 20:47:42  1h     WAITING
10      invenio_gc  admin     2008-07-04 19:53:59  5m     WAITING
```

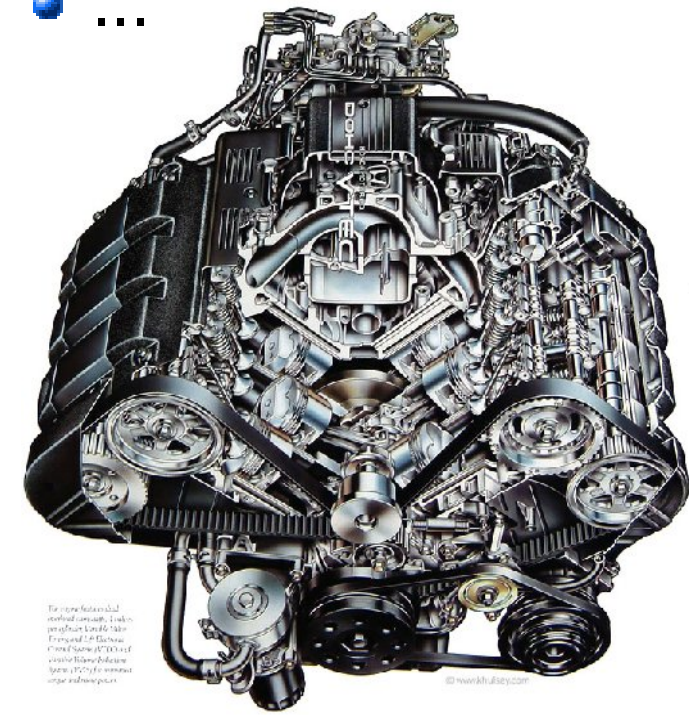
```
id: 9
priority: 0
proc: webcoll
user: admin
runtime: 2008-07-04 20:47:42
sleep: 1h
status: WAITING
progress:
executable : /opt/cds-dev/bin/webcoll
arguments  : -slh -uadmin

Press a key to continue...
```

```
Automatic Mode [A Manual] [1/2/3 Display] [P Purge] [L/L Log] [O Opta] [Q Quit]
```

Background daemons

- Inputting
- Indexing
- Pre-caching
- Monitoring
- ...





Modifying with BibEdit

Record #1

Your changes are TEMPORARY. To save this record, please click on submit.

Record # 1

Action: [Cancel](#) Record: [Add Field](#) | [Delete](#) Display: [Verbose](#) | [MARC](#)

037__	\$\$a	CERN-EX-0106015		
100__	\$\$a	Photolab		
245__	\$\$a	ALEPH experiment: Candidate of Higgs boson production		
246_1	\$\$a	Expérience ALEPH: Candidat de la production d'un boson Higgs		
260__	\$\$c	14 06 2000		
340__	\$\$a	FILM		
520__	\$\$a	Candidate for the associated production of the Higgs boson and Z boson. Both, the Higgs and Z boson decay into 2 jets each. The green and the yellow jets belong to the Higgs boson. They represent the fragmentation of a bottom and anti-bottom quark. The red and the blue jets stem from the decay of the Z boson into a quark anti-quark pair. Left: View of the event along the beam axis. Bottom right: Zoom around the interaction point at the centre showing details of the fragmentation of the bottom and anti-bottom quarks. As expected for b quarks, in each jet the decay of a long-lived B meson is visible. Top right: "World map" showing the spatial distribution of the jets in the event.		
595__	\$\$a	Press		
65017	\$\$2	SzGeCERN		
	\$\$a	Experiments and Tracks		
6531_	\$\$a	LEP		
8560_	\$\$f	neil.calder@cern.ch		
8564_	\$\$u	http://invenio-demo.cern.ch/record/1/files/0106015_01.jpg		
8564_	\$\$q	http://invenio-demo.cern.ch/record/1/files/icon-0106015_01.gif		
	\$\$x	icon		
909C0	\$\$o	0003717PHOPHO		

- The MARC editor



Record enrichment

- BibClassify to extract keywords (RDF taxonomy)
- RefExtract to extract reference lists from PDFs
- BibCheck batch checker and corrector

baryon: asymmetry effect: nonperturbative
energy: density field theory: scalar fluctuation
fundamental constant: fine structure gravitation inflation
inflaton: decay inflaton: oscillation
magnetic moment **mass** potential: scalar
preheating resonance: effect **rotation**
supersymmetry: flat direction temperature: reheating

Record indexing

- BibRank
- BibIndex

BibRank Admin Interface

Overview of rank methods [?]
Add new rank method

Code	Translations	Collections	Rank method
citation	Modify	Modify	Show Details / Modify / Delete
demo_jif	Modify	Modify	Show Details / Modify / Delete
wrd	Modify	Modify	Show Details / Modify / Delete



Manage Indexes

Menu
0. Show all 1. Overview of indexes 2. Edit index 3. Add new index 4. Guide

ID	Name	Fwd.Idx Size	Rev.Idx Size	Fwd.Idx Words	Rev.Idx Records	Last updated	Fields	Translations	Stemming Language
1	global	3.84 MB	3.26 MB	81,505	7,066	2008-07-04 19:32:52	any field	None	english
2	collection	0.001 MB	0.347 MB	12	7,066	2008-07-04 19:32:52	collection	None	None
3	abstract	1.164 MB	1.069 MB	22,319	1,939	2008-07-04 19:32:52	abstract	None	english
4	author	0.359 MB	0.467 MB	8,879	7,066	2008-07-04 19:32:52	author	None	None
5	keyword	0.036 MB	0.036 MB	947	7,066	2008-07-04 19:32:52	keyword	None	None
6	reference	0.24 MB	0.137 MB	6,982	42	2008-07-04 19:32:52	reference	None	english
7	reportnumber	0.312 MB	0.313 MB	7,192	3,911	2008-07-04 19:32:52	report number	None	None
8	title	0.684 MB	0.881 MB	13,629	7,066	2008-07-04 19:32:52	title	None	None
9	fulltext	1.349 MB	0.815 MB	37,488	76	2008-07-04 19:32:52	fulltext	None	None
10	year	0.001 MB	0.005 MB	26	7,066	2008-07-04 19:32:52	year	None	None
11	journal	0.006 MB	0.256 MB	129	7,066	2008-07-04 19:32:52	journal	None	None

2. Edit index [?]
Index name: Select a index -





Collection customization

WebSearch module



Create new collection [?]

Default name

Attach collection to tree [?]

Attach collection:

to parent collection:

with relationship:

Modify collection tree: Atlantis Institute of Fictive Science [?] [Printer friendly version](#)

Narrow by collection:

- ✗ Atlantis Institute of Fictive Science
 - ▼ ✗ Articles & Preprints
 - ▼ ✗ Articles
 - ▲ ✗ Preprints
 - ▲▼ ✗ Books & Reports
 - ▼ ✗ Books
 - ▲▼ ✗ Theses
 - ▲ ✗ Reports
 - ▲ ✗ Multimedia & Arts
 - ▼ ✗ Pictures
 - ▲ ✗ Poetry

Focus on...:

- ✗ Atlantis Institute of Fictive Science
 - ▼ ✗ CERN Divisions
 - ▼ ✗ Experimental Physics (EP)
 - ▲ ✗ Theoretical Physics (TH)
 - ▲ ✗ CERN Experiments
 - ▼ ✗ ALEPH
 - ▲ ✗ ISOLDE

Webcoll Status [?]

Record formatting

BibFormat Admin

This is where you can edit the formatting styles available for the records.

Manage Format Templates

Define how to format a record.

Manage Output Formats

Define which template is applied to which record for a given output.

Manage Knowledge Bases

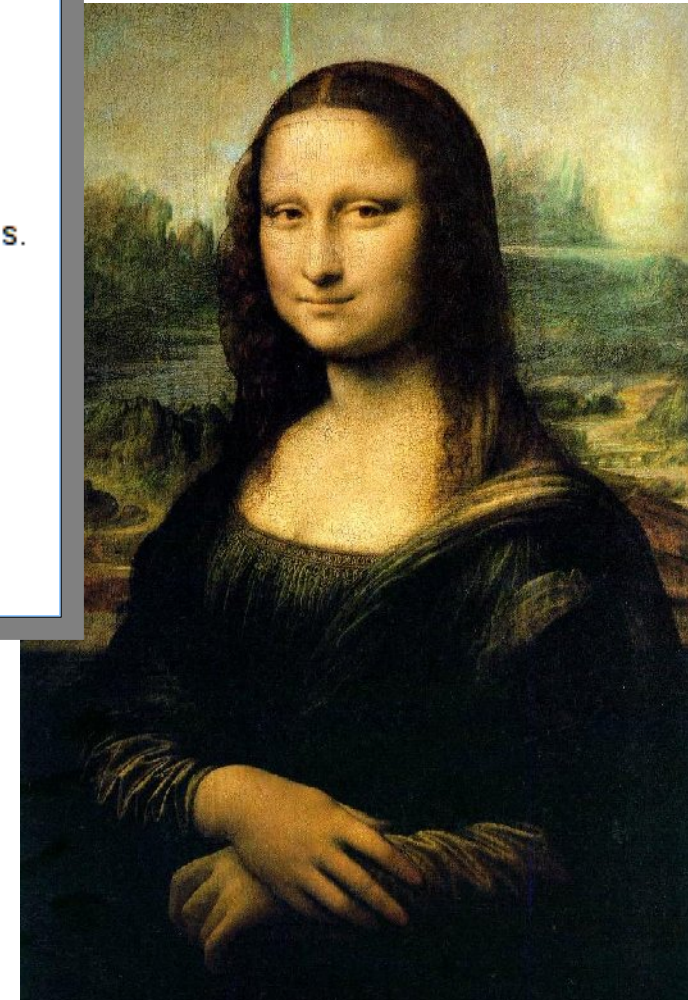
Define mappings of values, for standardizing records or declaring often used values.

Format Elements Documentation

Documentation of the format elements to be used inside format templates.

BibFormat Admin Guide

Documentation about BibFormat administration



- BibFormat elements and templates



Website formatting

ATLANTIS INSTITUTE OF FICTIVE SCIENCE

admin :: account :: messages :: baskets :: alerts :: groups :: statistics :: submissions :: approvals :: administration :: logout

Search Submit Personalize Help

Home

Atlantis Institute of Fictive Science

Search 7,066 records for:

any field Search Browse

Search Tips :: Advanced Search

Narrow by collection:

- Articles & Preprints (102)
 - Articles (35) Preprints (67)
- Books & Reports (6,955)
 - Books (16) Theses (6,937) Reports (4)
- Multimedia & Arts (9)
 - Pictures (7) Poetry (2)

Focus on:

- CERN Divisions (5)
 - Experimental Physics (EP) (1) Theoretical Physics (TH) (4)
- CERN Experiments (2)
 - ALEPH (1) ISOLDE (1)

SEE ALSO

CDS Invenio CERN Google

Atlantis Institute of Fictive Science :: Search :: Submit :: Personalize :: Help

Powered by CDS Invenio v0.99.0.20080630
Maintained by Samuele Kaplun@cern.ch
Last updated: 04 Jul 2008, 11:25

This site is also available in the following languages:
English Italiano Français

CERN Document Server

CDS Invenio | Library | Bulletin | EDMS

Search Submit Help Your CDS Administration

admin logout

Home

Atlantis Institute of Fictive Science

Search 7,066 records for:

any field Search Browse

Search Tips :: Advanced Search

Narrow by collection:

- Articles & Preprints (102)
 - Articles (35) Preprints (67)
- Books & Reports (6,955)
 - Books (16) Theses (6,937) Reports (4)
- Multimedia & Arts (9)
 - Pictures (7) Poetry (2)

Focus on:

- CERN Divisions (5)
 - Experimental Physics (EP) (1) Theoretical Physics (TH) (4)
- CERN Experiments (2)
 - ALEPH (1) ISOLDE (1)

SEE ALSO

CDS Invenio CERN Google

Atlantis Institute of Fictive Science :: Search :: Submit :: Personalize :: Help

This site is also available in the following languages:
English Italiano Français

Powered by CDS Invenio v0.99.0.20080630
Maintained by Samuele.Kaplun@cern.ch
Last updated: 04 Jul 2008, 11:25



• Templates with WebStyle



Samuele Kaplun – CERN Document Server team
Using Open Access Models for Science Dissemination [10th July 2008]

WebComment Admin

Menu

1. [View all reported comments](#)
2. [View all reported reviews](#)
3. [Delete a specific comment/review \(by ID\)](#)
4. [View all users who have been reported](#)
5. [Guide](#)

- [WebAlert](#)
- [WebBasket](#)
- [WebComment](#)
- [WebMessage](#)
- [Group management](#)



Looking for help?



e.g. <http://invenio-demo.cern.ch/help/admin/>

Admin Module	Admin Description	Admin Interface	Admin Guide
BibIndex Admin	Enables you to configure "word files", i.e. to define which bibliographic fields are indexed into which word indexes. The word indexes are then used by the search interface. For example, you can define that the logical author index is constructed from physical 100 \$a and 700 \$a bibliographic tags, you can force reindexing of the fulltext index, etc.	Manage indexes Manage logical fields	BibIndex Admin Guide
BibRank Admin	Enables you to configure various ranking methods to be used by the search engine. You can rebalance existing ranking sets, create new ranking methods, etc.	BibRank Admin Interface	BibRank Admin Guide
BibClassify Admin	Enables you to automatically classify documents according to keyword taxonomies and thesauri.	command-line configuration	BibClassify Admin Guide
BibFormat Admin	Enables you to specify how the bibliographic data is presented to the end user in the search interface. You can decide that titles should be presented in bold font, that for each author an automatic link to author's home page should be created according to some receipt, etc.	BibFormat Admin Interface	BibFormat Admin Guide
WebSearch Admin	Enables you to configure the search interface for various metadata collections. You can define new collections and organize them in the tree, you can define various portalboxes that would appear on the screen, you can define search options and search fields to present, etc.	WebSearch Admin Interface	WebSearch Admin Guide

References...

- CDS Invenio homepage: <http://cdsware.cern.ch/invenio/>
- CERN Document Server: <http://cdsweb.cern.ch/>
- CDS Invenio Demo installation: <http://invenio-demo.cern.ch/>
- Administrating CDS Invenio: <http://invenio-demo.cern.ch/help/admin/>
- Hacking CDS Invenio: <http://invenio-demo.cern.ch/help/hacking/>

And contacts:

Samuele.Kaplun@cern.ch

or our mailing lists:

<http://cdsware.cern.ch/invenio/lists.html>

