

CDS Invenio for users

http://cdsware.cern.ch/invenio/doc/uoamsd2008_users.pdf

History

- **1993** - CERN Preprint Server on the Web: institutional repository
- **1996** - CERN Library Server (weplib): added books and periodicals
- **2002** - CERN Document Server Software (CDSware): multimedia data and OAI-compliant
- **2006** - changed name to CDS Invenio
- **Today** - ...



The integrated digital library system

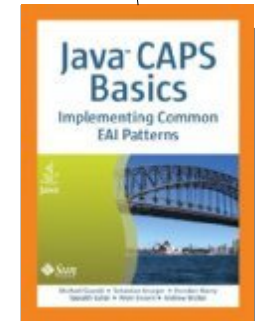
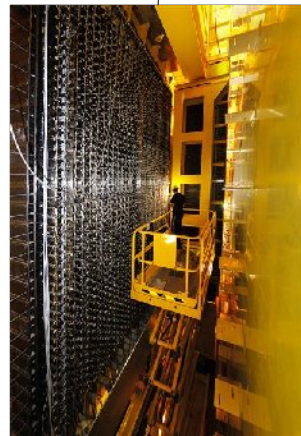
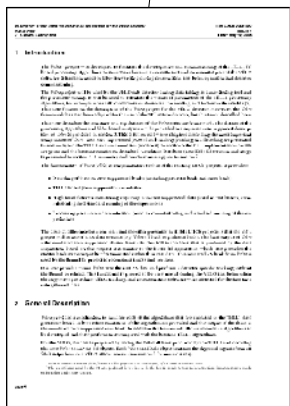
- OpenSource GPL project
- Python (and C and Lisp), MySQL and Apache
- Modularized architecture
- Based on open standards (MARCXML, MARC21, OAI-PMH, OpenURL...)
- Medium to big data repositories
- Flexible in every layer



Metadata and Data

- Who
- When
- Where
- What
- With whom
- ...

MARCXTM





Different installations



Samuele Kaplun – CERN Document Server team
Using Open Access Models for Science Dissemination [10th July 2008]

Different installations

- CERN Document Server: <http://cdsweb.cern.ch>
- International Linear Collider: <http://ilcdoc.linearcollider.org/>
- Réro doc: <http://doc.rero.ch/>
- Dipòsit Digital de Documents de la UAB: <http://ddd.uab.es/>
- More...: <http://cdsware.cern.ch/invenio/demo.html>
- Metadata on Internet Documents: <http://www.meind.de/>



Searching Demo

Search 970,254 records for:

any field

[Search Tips](#) :: [Advanced Search](#)

CERN Document Server

Search:

any field

[Search Tips](#) :: [Advanced Search](#)

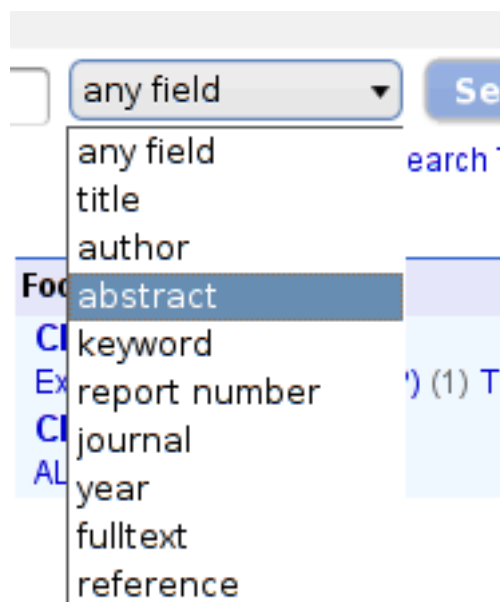
Search collections:

*** any collection ***

Sort:	Display results:	Output format:
latest first <input type="button" value="v"/> desc. <input type="button" value="v"/>	10 results <input type="button" value="v"/>	HTML brief <input type="button" value="v"/>
- or rank by - <input type="button" value="v"/>	split by collection <input type="button" value="v"/>	



Searching Demo



Keywords:

Google like syntax

Search via fields (*author:, year: ...*)

Search via MARC (*8564_u: ...*)

Kind of seaches

Any words (*foo bar ...*)

Exact phrase ("*foo bar*", '*foo bar*' ...)

Regular expression(*/foo.*bar/ ...*)

Boolean queries(*foo and bar ...*)

Parentheses(*(foo and bar) or (baz and bar)...*)

Stemming (*muon* → *muon and muons ...*)

Author-smart ("*Gys, T**" ...)

See also:

<http://cdsweb.cern.ch/help/search-tips>

Searching Demo

Collections and restricted collections



Narrow by collection:

- Articles & Preprints** (796,276)
 - [Published Articles](#) (302,640) [Preprints](#) (434,300)
 - [Theses](#) (15,816) [Reports](#) (5,582) [CERN Internal Notes](#) (12,064) [Committee Documents](#) (27,920)
- Books & Proceedings** (66,181)
 - [Books](#) (41,696) [Proceedings](#) (16,491)
 - [Standards](#) (7,996)
- Presentations & Talks** (15,826)
 - [Conference Announcements](#) (14,604) [Academic Training Lectures](#) (561) [Summer Student Lectures](#) (443) [General Talks](#) (145)
 - [Videotapes](#) (296)
- Periodicals & Progress Reports** (3,287)
 - [Periodicals](#) (2,616) [Progress Reports](#) (671)
- Multimedia & Outreach** (45,238)
 - [Photos](#) (12,892) [Videos](#) (648) [Press](#) (21,005) [Audio Archives](#) (410) [Exhibition Objects](#) (179)
 - [Brochures](#) (70) [Posters](#) (365) [HEP Institutes](#) (1,510)
 - [Experiments at CERN](#) (859) [Internet Resources](#) (7,300)
- Archives** (56,731)
 - [CERN Archives](#) (50,438) [Pauli Archives](#) (3,787) [DSU Archives](#) (713) [SL Archives](#) (1,026) [AB Archives](#) (767)

Focus on:

- CERN Articles & Preprints** (96,397)
 - [CERN Published Articles](#) (49,773) [CERN Preprints](#) (14,738)
 - [CERN Theses](#) (2,913) [CERN Reports](#) (1,165) [Committee Documents](#) (27,920)
- CERN Series** (14,222)
 - [CERN Yellow Reports](#) (1,119) [CERN Theory](#) (12,118)
 - [Academic Training Lectures](#) (561) [Summer Student Lectures](#) (443) [General Talks](#) (145)
- CERN Departments** (67,482)
 - [Accelerator Technology \(AT\)](#) (4,999) [Accelerators & Beams \(AB\)](#) (16,126) [Finance \(FI\)](#) (903) [Human Resources \(HR\)](#) (28) [Information Technology \(IT\)](#) (3,806) [Physics \(PH\)](#) (36,580) [Secretariat-General \(SG\)](#) (8,574) [Technical Support \(TS\)](#) (1,242)
- CERN Experiments** (17,155)
 - [LEP Experiments](#) (5,562) [LHC Experiments](#) (11,165)
 - [Recognized Experiments](#) (436)
- CERN R&D Projects** (780)
 - [CERN Accelerator R&D Projects](#) (780)

Search also:

- [CERN Indico](#) ↗
- [KISS Preprints](#) ↗
- [SPIRES HEP](#) ↗



OpenURL and LibX Demo

amazon.com



CERN Document Server

LibX



- Firefox and Internet Explorer integration
- External website integration





What's in a record...

Information References Discussion Usage statistics Fulltext

Internal Note

Report number: CERN-IT-Note-2007-025

Title: **Authentication/authorization issues and fulltext document migration for the CERN Document Server**

Author(s): [Kaplun, S](#)

Corporate author(s): CERN. Geneva. IT Department

Collaboration: UDS

Imprint: 16 Oct 2007. - 91 p.

Subject category: Computing and Computers

Free keywords: [CERN](#) ; [CDS Invenio](#) ; [Authentication](#) ; [Authorization](#) ; [Single Sign-On](#) ; [FireRole](#) ; [IntBitSet](#) ; [S2D](#) ; [Role Based Access Control](#)

Abstract: This thesis describes a master degree project, ending studies at Università degli Studi di Milano-Bicocca of Computer Science, Milano. This work has been realized at the European Organization of Nuclear Research (CERN), in Geneva. The aim of the project was to enhance CDS Invenio, a digital library software developed by CERN, in the authentication/authorization area, to develop an automatic migration tool for moving documents from the legacy architecture and to develop an extension to Python in C for solving indexing time issues.

Email contact: Samuele.Kaplun@cern.ch

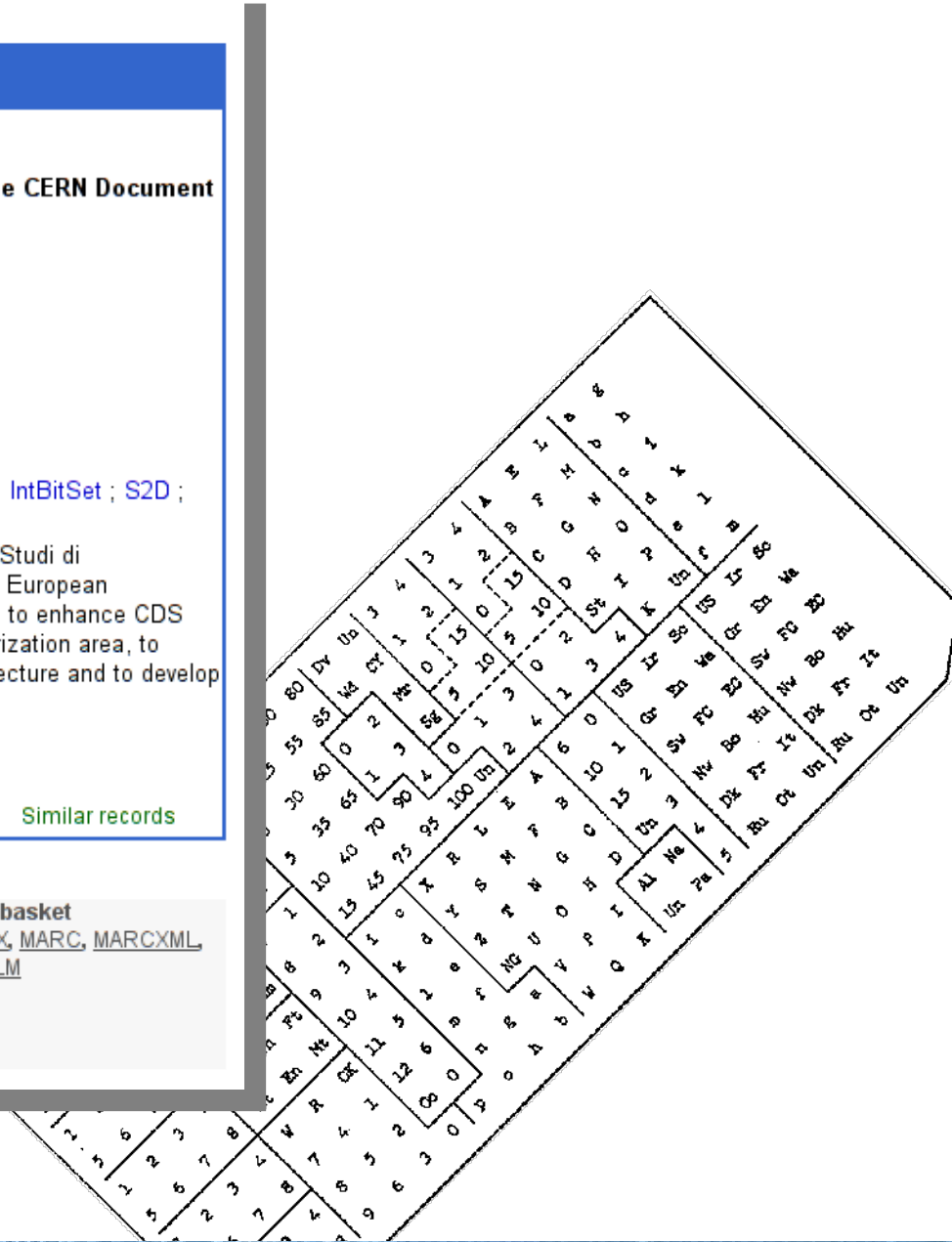
Record created 2007-10-18, last modified 2007-10-20 [Similar records](#)

Access to fulltext: PDF

Rate this document: (Not yet reviewed)

➔ **Add to personal basket**

➔ **Export as** [BibTeX](#), [MARC](#), [MARCXML](#), [DC](#), [EndNote](#), [NLM](#)



About authors...

Ellis, John R.

Affiliations:

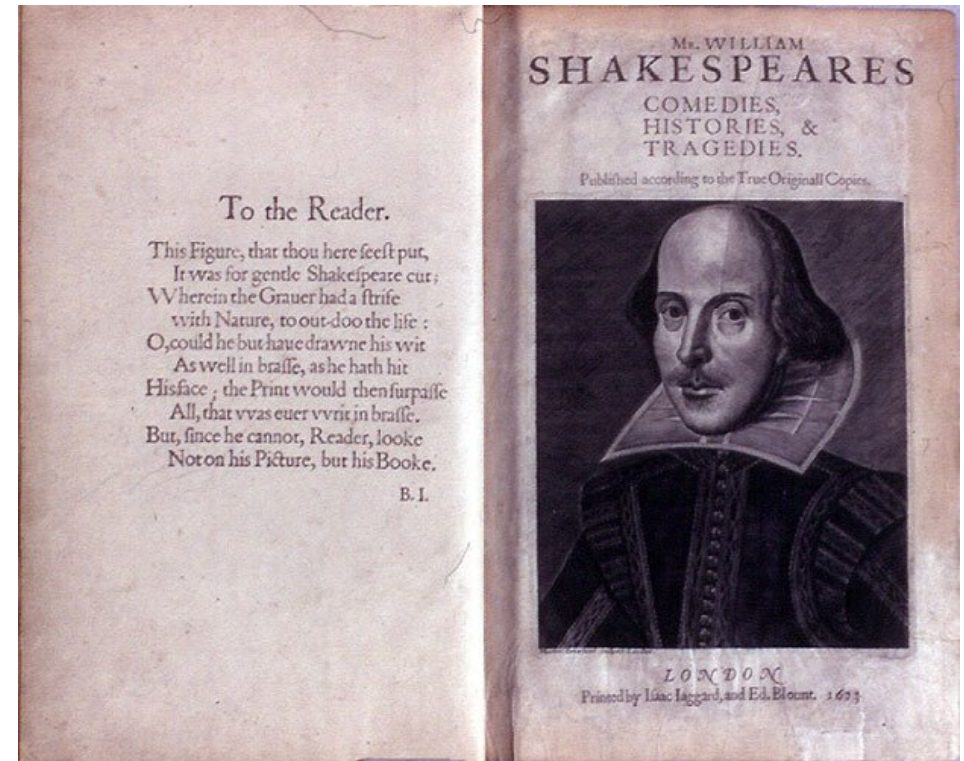
(5)
 LBL, Berkeley (6)
 Sussex U. (4)
 Caltech (5)
 CERN (750)
 HARC, Woodlands (1)
 UC, Santa Cruz (1)
 Cambridge U. (3)
 Minnesota U. (1)
 Cambridge U., DAMTP (7)
 Oxford U. (2)
 Texas A-M (1)
 Maharishi U. of Management (1)
 Stanford U., Appl. Mech. Dept. (1)
 SLAC (42)
 Fermilab (1)

Frequent keywords:

supersymmetry (184)
 numerical calculations (164)
 bibliography (159)
 numerical calculations: interpretation of experiments (118)
 Higgs particle: mass (93)
 astrophysics: missing-mass (90)
 BIBLIOGRAPHY (86)
 SUPERSYMMETRY (85)
 string model (81)
 NUMERICAL CALCULATIONS (79)

Frequent co-authors:

Antoniadis, Ignatios
 Campbell, B.A.
 Campbell, Bruce A.
 Carena, Marcela S.
 Brower, R.C.
 Chanowitz, Michael S.
 Chankowski, Piotr H.
 Brower, Richard C.
 Barbiellini, G.
 Anselmo, F.



Recent developing:
 authors oriented pages

See e.g.:

<http://invenio-demo.cern.ch/author/ellis>

Your Account

Your Account

You are logged in as kaplun. You may want to a) [logout](#); b) edit your [account settings](#).

Your Messages

You have **0** new messages out of **2** messages.

Your Baskets

You have **1** personal baskets and are subscribed to **4** group baskets and **1** other users public baskets.

Your Alert Searches

You own the following alerts::

Your Searches

You have made 156 queries. A [detailed list](#) is available with a possibility to (a) view search results and (b) subscribe to an automatic email alerting service for these queries.

Your Groups

You can consult the list of [your groups](#) you are administering or are a member of.

Your Submissions

You can consult the list of [your submissions](#) and inquire about their status.

Your Approvals

You can consult the list of [your approvals](#) with the documents you approved or refereed.

Your Administrative Activities

You are enabled to the following roles: *CERN_Bulletin_Publishers*, *webaccessadmin*, *mediaarchiveadmin*, *bibeditadmin*.

Here are some interesting web admin links for you:

[Configure WebAccess](#)

[Run BibEdit](#)

For more admin-level activities, see the complete [Admin Area](#).

Your Account!



Commenting/Reviewing Demo

Information | References | Discussion | Usage statistics | Fulltext

Authentication/authorization issues and fulltext document migration for the CERN Document Server - Kaplun, S - CERN-IT-Note-2007-025

Comments (0) | Reviews (0)

Start a discussion about any aspect of this document.

Add comment

Note: Your nickname, *kaplun*, will be displayed as author of this comment

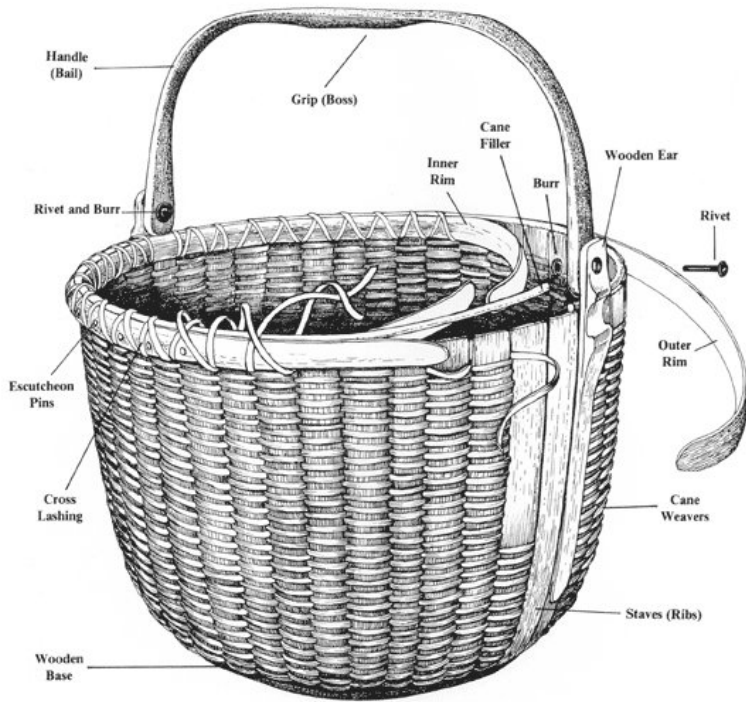
Add comment

Similar

- Commenting
- Reviewing



Baskets unveiled



● Personal Baskets

● Public Baskets

Display baskets



Personal baskets



Group baskets



Others' baskets

Tesi (1)



Create new basket



sam

3 records - last update: 30 Jun 2008, 18:56

Edit basket

Authentication/authorization issues and fulltext document migration for the CERN Document Server / Kaplun, S- UDS.

This thesis describes a master degree project, ending studies at Università degli Studi di Milano-Bicocca of Computer Science, Milano. [...]

CERN-IT-Note-2007-025; Geneva : CERN, 16 Oct 2007 . - 91 p [Access to fulltext](#)

[Detailed record - View comments](#)

The LHCb RICH : its application to the study of the $B_s \rightarrow J/\psi \Phi$ decay channel and magnetic distortions corrections / Storaci, B et al.

The LHCb experiment has been designed to study CP violation and rare B meson decays with very high precision. [...]

CERN-THESIS-2007-071 ; - Geneva : CERN, 2007. - 116 p.

[Access to fulltext document](#)

[Detailed record - View comments](#)

Groups Demo

Your Groups

You are an administrator of the following groups:

Group	Description
You are not an administrator of any groups.	

Create new group

You are a member of the following groups:

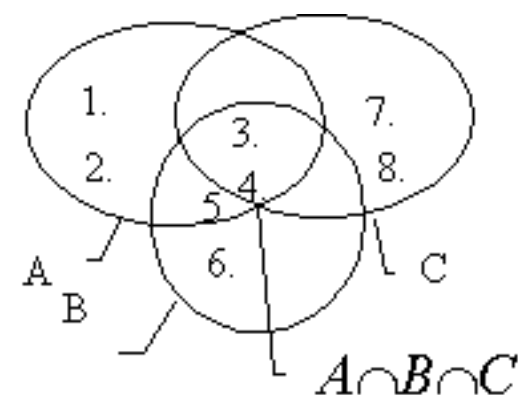
Group	Description
You are not a member of any groups.	

Join new group

Leave group

You are a member of the following external groups:

Group	Description
ais-users-members [CERN]	ais-users-members@cern.ch (CERN Mailing list)
bulletin-alert-eng-members [CERN]	bulletin-alert-eng-members@cern.ch (CERN Mailing list)
ccnet-members [CERN]	ccnet-members@cern.ch (CERN Mailing list)
cds-admin-members [CERN]	cds-admin-members@cern.ch (CERN Mailing list)
cern-fellows-members [CERN]	cern-fellows-members@cern.ch (CERN Mailing list)
club-martial-arts-members-members [CERN]	club-martial-arts-members-members@cern.ch (CERN Mailing list)



- Groups in Invenio
- External Groups

Alerts Demo

Your Alerts

Set a new alert from [your searches](#), the [popular searches](#), or the input form.

No	Name	Search checking frequency	Notification by email	Result in basket	Date last run	Creation date	Query	Action
#1	CERN Bookshop	weekly	yes	- no basket -	30 Jun 2008, 00:00	17 Sep 2007, 00:00	Collection: CERN Bookshop	Remove Modify Execute search
#2	computing	weekly	yes	- no basket -	30 Jun 2008, 00:00	14 Mar 2007, 00:00	Pattern: computing Collection: Books	Remove Modify Execute search

You have defined **2** alerts.



- Setting up alerts for a given query
- Baskets interaction



RSS Demo



**RSS Integration
for any query**

CERN Document Server - Mozilla Firefox

File Modifica Visualizza Cronologia Segnalibri Strumenti Guida

← → ↻ ⌂ 📁 [CDS] http://cdsweb.cern.ch/rss?cc=Books ☆ [G] Google 🔍 [ABP]

[CDS] CDS ▾ Any field ▾ [] Search CERN Document Server Catalog ▾ Clear 🔑 Scholar

Abbonati a questo feed utilizzando Segnalibri Live ▾

Utilizza sempre Segnalibri Live per l'abbonamento ai feed.

Abbonati adesso

CERN Document Server **CDS**

CERN Document Server latest documents

[Local And Global Analysis of Nonlinear Dispersive And Wave Equations](#)
07/04/08 04:47

[The Complete Guide to Starting and Running a Bookshop](#)
07/04/08 04:47

[Fields, Symmetries, and Quarks](#)
07/04/08 04:47



Samuele Kaplun – CERN Document Server team
Using Open Access Models for Science Dissemination [10th July 2008]

Submission Demo

Submit

Document types available for submission:

Please select the type of document you want to submit:

• Preprints, Notes, Articles...

- CERN Preprints Automatic Numbering
- CERN Preprints
- CERN Thesis
- CERN Open Documents
- Departmental Internal Notes
- TOTEM Notes
- imXgam Internal Notes
- ANTARES Plots
- EGEE Publications and Technical Reports

• Experiments Committees

- LHCC
 - LHCC Documents (Proposals etc)
 - LHCC Meeting Documents (protected)
 - LHCC Technical Design Reports
- INTC
 - INTC Documents (Proposals etc)
 - INTC Meeting Documents (protected)
- SPSC
 - SPSC Documents (Proposals etc)
 - SPSC Meeting Documents (protected)
- RB
 - RB Meeting Documents (protected)

• Multimedia

- CERN Photo/Videoshoot
- CERN Master Photos
- CERN Master Videos
- CERN Master Audio

Play with...

<http://invenio-demo.cern.ch/submit/>



Looking for help?

e.g. <http://invenio-demo.cern.ch/help/>



Help Central

Welcome to Help Central of the Atlantis Institute of Fictive Science.

Search Tips

This page presents you with useful tips and techniques in order to help you use the Atlantis Institute of Fictive Science site to the full.

Search Guide

Full guide on how to search Atlantis Institute of Fictive Science.

Submit Guide

Get help with submitting to Atlantis Institute of Fictive Science.

References...

- CDS Invenio homepage: <http://cdsware.cern.ch/invenio/>
- CERN Document Server: <http://cdsweb.cern.ch/>
- CDS Toolbar: <http://libx.org/editions/download.php?edition=4F46CD81>
- CDS Invenio Demo installation: <http://invenio-demo.cern.ch/>

